

Ultimate Boat Lifts, LLC

"Your Friendly Boat Lift Dealer!"

- Standard Boat Lifts
- Overhead Boat Lifts
- PWC Lifts
- Jet Boat Lifts
- Sail Boat Lifts
- Saltwater Lifts
- Lift Parts
- Dock Ladders
- Dock Steps
- Dock Accessories

252-586-7692 (ofc)

252-578-0211 (cell)

www.UltimateBoatLifts.com

stamp

CUSTOM BOAT LIFTS ~ PWC LIFTS ~ JET SAIL LIFTS ~ SALT WATER LIFTS DOCK LADDERS - DOCK STEPS ON-LINE PART STORE

Ultimate Boat Lifts, LLC is a full-service boat lift manufacturer, **service and installation** company located near Lake Gaston in Littleton, NC. We offer an extensive line of boat lifts from our economical galvanized freshwater lifts to our more elaborate aluminum coastal lifts. In addition we install and service Personal Watercraft Lifts. Along with lift installation, we also install ladders and dock steps, and we troubleshoot and repair lifts, replace cables, switches, motors and more. Flat plate gear drive units as well as our enclosed maintenance-free drives are available for all applications.



We offer engineered lifts with product liability from 3000lbs to 120,000lbs lifts, and all of our lifts come with stainless steel cable and gear covers.

We aren't your ordinary boat lift company. Everything we make is custom designed to meet your needs. We are unique in that we offer what we call a **"clean lift"** - most overhead boat lifts use grease on the gears and cables, which then drips into your boat.

Many installers use unsightly mud-flaps, plywood and "grease sleeves" to try to keep your boat clean. But not Ultimate Boatlifts -- we use special nylon inserts that self-lubricate, eliminating grease stains and metal-to-metal friction.



Come talk to our experienced staff so we can show you why our lifts are better.



Convenient Payment Types



SHOP ON-LINE

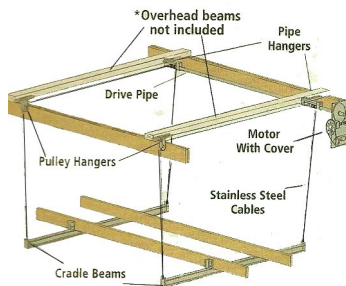
Ultimate Boat Lifts, LLC

"Your Friendly Boat Lift Dealer!"

252-586-7692

Littleton, NC

Standard Galvanized Boat Lifts



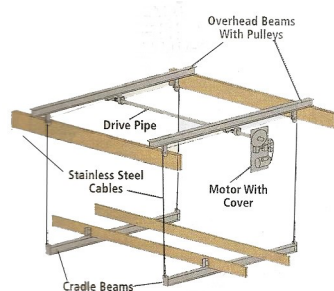
Motor Sizes

- 3500LB - 3/4 HP
- 4500LB - 1HP

Standard Boat Lift Features

- Hot dipped galvanized construction
- 80' 1/4" stainless steel cables
- 4-stainless steel thimbles
- 8 - stainless steel clamps
- 3/4 HP sealed motor with aluminum back plate, spring loaded switch, 16' control cable with ground fault
- Full plastic covers
- Bunk carpet
- 2 - bottom beams
- 2 - pulley brackets with nylon sheaves
- 2 - pipe brackets with nylon bushings
- 2 inch scheduled 40 galvanized pipe
- Galvanized fasteners to install
- Lifetime warranty on gear plate & 1 year on electrical parts
- WOOD BOARDS NOT INCLUDED
- Moveable brackets for different applications
- Aluminum boat lift bunks - 8" tall x 12' long with 5 1/2" wide rubber padding. Made to give the max support for boats.

Overhead Boat House Lifts



Motor Sizes

- 4500LB - Aluminum back plate - standard
- 600LB - Aluminum back plate not available
- 7000LB - Aluminum back plate not available

Overhead Boat Lift Features

- Hot dipped galvanized construction
- 80' 1/4" stainless steel cables—4500LB lift
- 80' 5/16" stainless steel cables - 6000-7000LB
- 4 - stainless steel thimbles
- 8 - stainless steel clamps
- 1 HP sealed motor with aluminum back plate, spring loaded switch, 16' control cable with ground fault
- Full plastic covers
- Bunk carpet
- 2 - bottom beams
- 2 - overhead beams with oil impregnated nylon inserts
- 2 - nylon sheaves mounted on overhead beams
- 2 inch scheduled 40 galvanized pipe
- Galvanized fasteners to install
- Lifetime warranty on gear plate & 1 year on electrical parts
- WOOD BOARDS NOT INCLUDED
- Moveable brackets for different applications
- Aluminum boat lift bunks - 8" tall x 12' long 5 1/2" with wide rubber padding. Bunks are made to give maximum support for boats.

Galvanized PWC Lift



PWC Lift Features

- HOT dipped galvanized construction
- 1/4 " stainless steel cables
- 3/4 HP sealed motor wired for 110 volt with spring loaded switch, ground fault - 6' control cable
- Plastic cover
- Black carpet
- Galvanized fasteners for installation
- 1 year warranty on electrical parts
- WOOD BOARDS NOT INCLUDED

PWC Lift Range

- STANDARD 8' LIFT with 6' lifting range
- OPTIONAL 10' LIFT with 8' lifting
- OPTIONAL LIFT with 10' lifting range

PWC Rotating Saltwater Lift



- Marine grade Aluminum 1500LB
- Rotates 180° for easy access from dock to water
- 1/4" Stainless steel cables
- 3/4 HP Sealed motor wired for 110 volt with spring loaded switch, ground fault - 6' control cable
- Plastic cover
- Black carpet
- Galvanized fasteners for installation
- 1 year warranty on electrical parts
- WOOD BOARDS NOT INCLUDED
- Rotates 180 degrees
- Lift is completely out of the water
- Lift mounts to a piling 40" above the pier
- 8' of travel—longer tubes are available



Additional Lift Options

Standard / Overhead Lifts

- PVC pipe to cover cables
- GEM remote control
- Double jet ski brackets
- Pontoon brackets
- Tall ski boat brackets
- Custom design features
- Aluminum boat lift bunks
- Aluminum cable winder system
- Aluminum top and bottom beams

Personal Watercraft Lifts

- Powder coated to match color
- 304 stainless steel for saltwater
- 10' & 12' lengths any length available
- Small jet, sailboat lifts available
- GEM remote control
- Dock Stand
- 2x3 tubing arms for small boats, skiffs, & sail boats